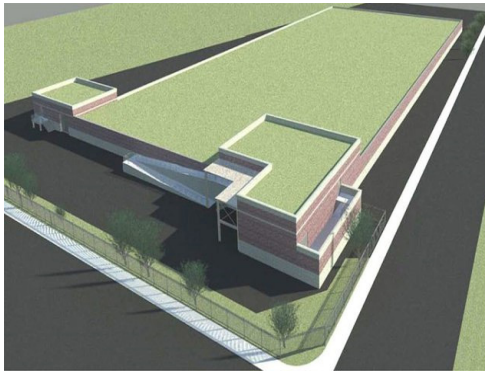


LOGAN & BRECKINRIDGE STREET CSO STORAGE BASIN

LOUISVILLE, KENTUCKY



Owner

Louisville/Jefferson County
Metropolitan Sewer District

Client

O'Brien & Gere

Services

Site/Civil Engineering
Structural Engineering

Cost

Construction Cost:
\$50 Million

BA Engineers is providing structural engineering for the design of a 17.8-million gallon underground covered storage basin complete with a pump station and approximately 5,000 of interceptor sewer. This facility is currently being constructed adjacent to and along side of South Fork of Bear Grass Creek, where the interceptor will collect combined sewer overflow from CSO's 113,152, 91, 92, 146, 179, 149, 117 and common overflows from 11 Sneads Branch Run CSOs. The storage basin is designed as gravity in/pump out facility and will transport and temporarily store overflow of up to 17MG. The storage basin is being constructed of cast-in-place (CIP) concrete, pre-cast pre-stressed concrete box beams and pre-stressed double tee design for the roof system and bay spacing.

This project is in support of the Louisville & Jefferson County MSD's Long-Term Control Plan (LTCP). Specific tasks include assistance with the basin technology reviews, interceptor technology reviews, and structural design of the basin alternatives. Structural engineering includes developing three roof design concepts and developing all storage basin components. The project includes removal and replacement of dry weather channel, design of diversion structures, as well as existing channel review.